



COMPARATIVE STUDY

~ Lidyanis Torres-Montanez ~

My comparative study focuses on analyzing two different artists and four of their artworks. These artists are Nikki Johnson and Georges Braque. Their pieces are being compared and contrasted in their formal qualities, style and technique, as well as their purpose and function. I will also be critiquing the use of emotion portrayed through artistic style and emotions evoked from the audience. The artists Niki Johnson and Georges Braque are presented in my works as inspiration.

Niki Johnson

Cultural Significance

Niki Johnson is an active local artist influenced by American culture and politics within her pieces presented through use of symbolism. These symbols include places, objects, and icons. As a strong advocate for American social justices, Nikki Johnson often features feminist ideologies into her works, representative of female role models, modern American politics, social justice, stereotypes, and the role of wives using images. She is known for taking calculated risks when addressing sensitive subjects such as gender, identity, power, and human rights.



Johnson is also highly reflective when it comes to religion - specifically Catholic, with its beliefs of death and the afterlife. Churches play a significant role in her pieces as well. She finds a certain elegance in their forms, as well as they are reminiscent to her childhood. She most closely resonates with the countryside, due to its peace and tranquility which she finds inspiring, influencing the aesthetics of many of her pieces.

Interpretation of Function and Purpose

~ Annotation of “God & Country” ~

The vintage fundraising plates are part of Nikki Johnson's memento works. She had thought of taking the main architectural structure of the churches out as an additive gesture, in which our trained relationship with the churches and other objects within the plates are broadened.

God is then apparent in all aspects of nature and life. However, God cannot be seen. Johnson had intended to place the churches in the center, so that it would be as if they were shouting that the lord is with them, but was missing where life flourishes and nature is still preserved.



God is seen outside of the silhouettes in the trees, the sky, and the clouds. The silhouettes in the plates design relate to empty rural lots in America where the churches used to be throughout the years.

A majority of these churches have disappeared. They may have been taken down, lost to nature, or unused and forgotten.

Interpretation of Function and Purpose

~Annotation of “A Vision in White”~

This casting is meant to capture Michelle Obama’s splendor through use of minimalistic details. The sculpture of the figure contains elegant smooth curves and uses white due to its association with purity. This is also displayed through the garment placed on the sculpture.

This piece overlaps the topics of media influence, power, race, gender, as well as refusing to be a subject of sexual objectification.



Johnson had represented the distilling of the media’s portrayal of Michelle Obama down to her most discussed features to demonstrate how Michelle Obama’s portrait remains partial and fragmented. This is part of the limitations of the “lens” in media coverage. Through simplification of Michelle Obama’s figure, the viewer can get a rid of the icon and focus on the abstract figure itself which are metaphoric to Michelle Obama’s persona.

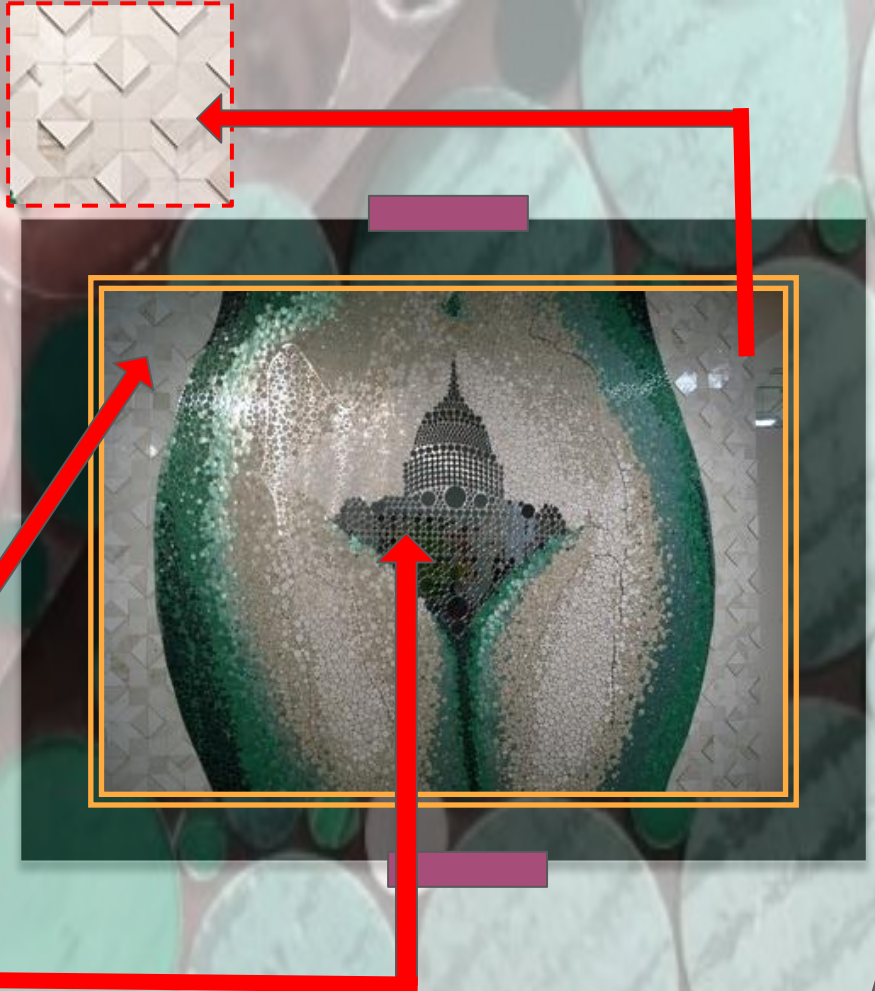
Interpretation of Function and Purpose

~ Annotation of “*Hills & Valleys*”~

This work was created from the aluminum of defunded planned parenthood signs. This piece was made to represent the abdomen, hips thighs, and groin of a women. The groin area has been vajazzled to look like the US capitol building. This is relevant because it is where decisions are made about the freedom women have over their body. These rights include pregnancy, healthcare, and abortion-reproductive rights.

Background sparkle and appeal of traditional quilt pattern known as “Sarah’s Choice” which is visual traditional women's craft. This infuses notions of heritage and heirloom in women’ culture, as well as encompassing the notion of a woman making her choice.

At the mons pubis of the figure is the Capitol Building symbolizing the control the government has over the rights over women and their bodies.



Interpretation of Function and Purpose

~ Annotation of "First Ladies"~

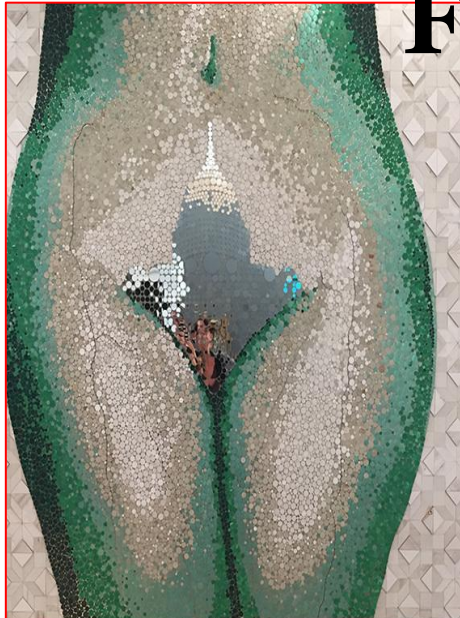


This series is in dedication to the First Ladies of the white house who had positive impacts. They are not actual portraits. Instead, they are created to have the first ladies recognized by association. In using pastel colors, it unifies the individual pieces through giving it a feminine feel. In viewing the pieces put together, each panel can be identified for which first lady it is representative of. This is done through the cut out shape of the silhouette, as well as the colors and what is contained within the collages. These are things like the accomplishments of the first ladies and good causes they had stood for.



The repetition of organic shapes and layers give the individual pieces depth, as well as a sense of distance, simulating going into the past.

Formal Qualities



Simple color schemes are there to not distract audience of message. Often, Johnson has subjects in a light palette with contrasting colors in the background. This brings further subject emphasis.



Repetition of line and shapes are used throughout the pieces. “A vision in white” uses soft curving lines to give the subject a sense of grace and elegance, and provide form for the figures. “God and Country” uses repetition of circles in the plates to unite each one to one another. “Hills and Valleys” uses repetition of encrusting as an esthetic quality, show her personal belief, as well as gives form to the subject. “First Ladies” uses repetition in colors as well as organic shapes to give unity between the pieces and the piece itself.

The composition of all these pieces are centered. This draws emphasis to the subjects and their meaning. It also draws the audience to experience the individual piece.



The subjects and recurring themes of the pieces include:

- Women political figures
- Societal changes
- Abstract/Organic shapes



Georges Braque

Cultural Significance

Braque was attracted intensely to Nature. His subjects primarily focused on seasons of the year, animals, trees, objects, people, and landscapes.

Georges Braque mastered the revolutionary art movement of cubism in his paintings and drawings. These paintings and drawings were inspired by the artistic style of Picasso. He had spent hours on end drawing still lifes and viewing objects from various angles. This gave interesting forms, as well as fantastic perception of the landscapes in which he created.

Georges Braque was also inspired by the Fauvism movement. He conveyed his emotions or the emotions of the landscape through use of color. This not only gave way for interpretation of emotion, but also to identity and character.



Interpretation of Function and Purpose

~ Annotation of "*Gray Weather in Cove*"~



Braque uses a serene landscape accompanied by cool colors and muted warm colors to create a calm and peaceful visual.

His swift and elegant brushstrokes illuminate the sense of peace, unity, and harmony in the painting giving the viewer a breeze of emotions. Braque uses blotches of pastel and a contrast of earthy hues to evoke those emotions of happiness and tranquility.

The organic shapes give the painting a hint of relaxation looking into the bay at a mountain in the day surrounded by nature's beauty.

Interpretation of Function and Purpose

~Annotation of “*Viaduct at L'Estaque*”~

Braque’s “*Viaduct at L'Estaque*” resembles the popular Cubist movement. He painted the buildings from multiple viewpoints. These viewpoints do not correlate with each other, giving a confused sense of distortion to the viewer. He does this with the buildings on the bottom and the bridge-like structure at the top. We can tell by the shadows, direction of the arches, and the direction of the lines.

The harsh lines from the geometrical shapes contrast with the curved shape lines of the arches and trees. Incorporating these harsh lines caused by the geometric shapes along with the warped buildings give the painting its cubist feel.

Braque uses a green, brown, and yellow color palette for its soft tranquil hues within abstract shapes of his trees, contrasting in the chaotic line work of the geometrical shapes.



Interpretation of Function and Purpose

Braque had drifted away from cubist and worked making Fauvist paintings, where he had loose, untamed brushwork, letting the paint flow into each other, partially blending, and using vibrant eye-catching colors.



This artwork uses color to influence the emotion and feelings of the viewer. The warm colors and dark shadows evoke the feeling of a warm and sunny day outdoors.

Looking through the slanted trees with blotches of colors giving view to a house in the distance evokes a sense of passion and nostalgia.

The slight use of cool colors and slanted trees also give an impression of a wind blowing in what seems like the beginning of autumn.



~ Annotation of "*Landscape at La Ciotat*"~

Interpretation of Function and Purpose

~ Annotation of “*Landscape near Antwerp*”~

Movement gives a carefree sense to the landscape as well as add a sense of life and vibrancy

The mixture of patches of warm and cool colors in the piece heightens the implied tranquil experience.



The organic shapes give the impression of reality. Combined with the still environment, it is like the sound of the surroundings are coming from the painting with a feeling of peace.

Formal Qualities

Braque's fauvist paintings use semi controlled blotches of hues. Harmony and unity is created through incorporating the same colors all throughout the piece that evoke warm or cool feelings. The scene is well balanced, not too chaotic, creating a sense of peace, tranquility, passion, and/or nostalgia to viewer.



The composition of the pieces are centered. All his pieces have a heavy emotional tie when using color. There is a strong connection to nature and grasping the character of it and objects within his pieces, in order to bring emphasis on individual moments captured to be blessings.



Free flowing organic and geometric shapes, along with color usage, give way to the emotional state of mind of the individual piece.



Pieces use a broad color schemes, whether extremely vibrant or muted, sometimes both even within a single piece. Often these colors are not true to real life, but function together giving heavy contrasts, making the pieces more aesthetically pleasing.

Comparing & Contrasting Styles



Niki Johnson

- Calculated risks when approaching her subject
- Simplistic shapes
- Feminin
- Political
- Uses known figures
- 3-dimensional



- Broad color schemes
- 2-dimensional
- Inspired by nature
- Inspired by specific moment or event

Georges Braque

- Softer approach
- Complex geometric and organic shapes
- Landscapes, people
- Objects, nature
- Swift brushstrokes
- Gives character to subjects

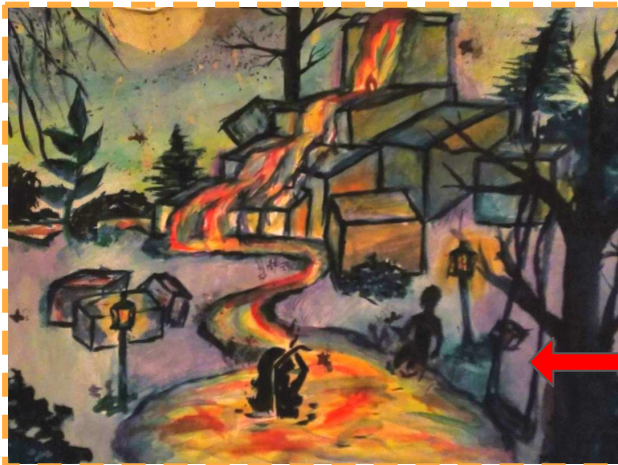


Formal Introduction to own works

These artworks were inspired by historical artist Georges Braque, and local artist Nikki Johnson in their style, approach, and technique. They also are reminiscent to certain aspects of their inspired pieces. These artists were chosen because after research, they had inspired me to want to approach art in the same way.

This piece is a reflection on the political issue of abortion. It is a gray area in our society that sparks up much debate. This piece addresses both sides - life or pro-choice. The right side of the

female head is pro-life and the left is pro-choice. I was inspired by Niki Johnson's approach to political issues and Romare Bearden's art style.



The purpose of Dreamscape is to present a visual translation of dreams combined that represent what I find most important to me. My artist inspiration is Henri Matisse's figure expression combined with Georges Braque's landscapes using vivid color splotches, coarse line work, and

Comparing Formal Qualities



- Reminiscent of geometric shapes
- Reminiscent of stacked structure
- Beige color free flowing, infused with background
- Reminiscent in setting/ Foliage



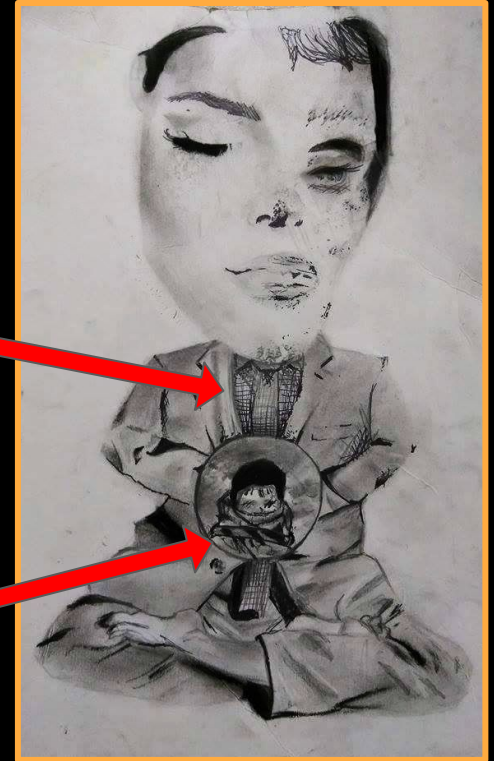
- Vibrant eye-catching hues that emphasize water
- Movement in the brushstrokes, as well as patches of color
- Reminiscent in setting

Comparing Formal Qualities



- Implied texture and Contains pattern
- Composition is centered

- Layered cut outs and partial images
- Similar approach to foreground and background



Comparing Style and Technique

- Vibrant colors
- Setting
 - contains unnatural colors placed in unrealistic spots
- Untamed brushstrokes
- Varies in line weight
- Contrast of warm and cool colors



- Composed in the center
- Sense of time of day
- Cool tranquil environment
- Geometric and organic shapes
- Implied texture
- movement

Comparing Style and Technique

- Implied texture
- Foreground and background
- Collage of pieces placed in harmony causing smooth transitions, creating a sense of unity



- Cut outs
- Risky concept
- Composed in the center to provide emphasis
- Sense of purity
- Multi-concept
- Communicative of feeling that should be evoked through facial expression